

MONTHLY MEMBERSHIP PROGRESS REPORT

LOCATION WISCONSIN

District 27 D2

Results as of: 4/30/2021

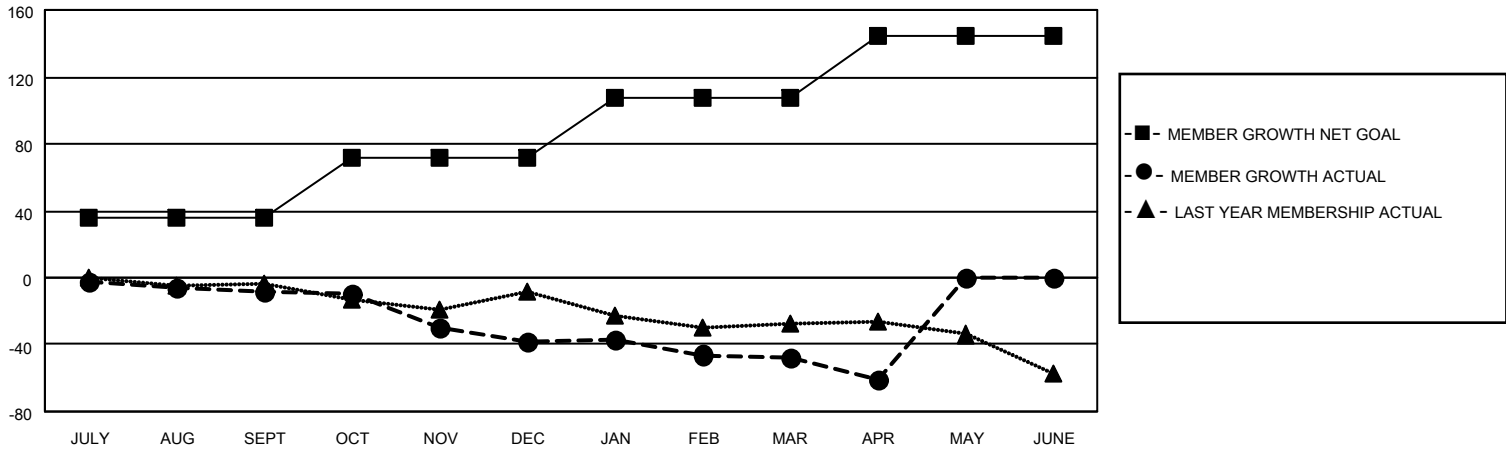
Clubs			
RESULTS FOR 2020-2021			
QUARTER	NEW CLUB GOAL	NEW CLUBS	DROPPED CLUBS
JULY/AUG/SEPT	0	0	0
OCT/NOV/DEC	0	0	0
JAN/FEB/MAR	1	0	0
APR/MAY/JUNE	0	0	0

Members			
RESULTS FOR 2020-2021			
QUARTER	MEMBER GROWTH NET GOAL	MEMBER GROWTH ACTUAL	DROPPED MEMBERS ACTUAL (including transfers)
JULY/AUG/SEPT	36	35	42
OCT/NOV/DEC	36	18	46
JAN/FEB/MAR	36	23	31
APR/MAY/JUNE	36	2	15

GOALS AND ACTUAL NEW CLUBS CUMULATIVE



GOALS AND ACTUAL MEMBERS CUMULATIVE



DROPPED CLUBS: 0	27 CLUBS OF 48 ADDED 1 OR MORE NEW MEMBERS	<p style="text-align: center;"><u>GENDER DISTRIBUTION</u></p> <p>MALE 1,104 (73.06%)</p> <p>FEMALE 407 (26.94%)</p>
<p style="text-align: center;"><u>DROPPED MEMBERS</u></p> <p>DECEASED 16</p> <p>CLUB CANCELLED 0</p> <p>OTHER 118</p> <hr/> <p>TOTAL 134</p>	<p>CLICK HERE FOR CUMULATIVE MEMBERSHIP DATA</p>	<p>TOTAL FAMILY UNIT MEMBERS 343</p> <p>FAMILY MEMBERS PAYING HALF DUES 176</p>